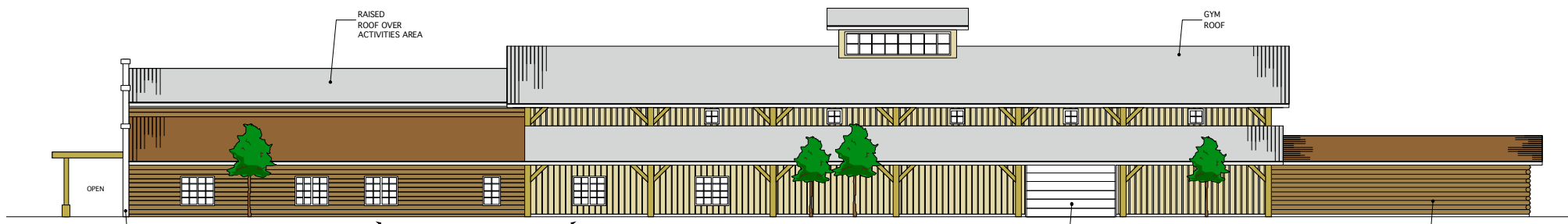
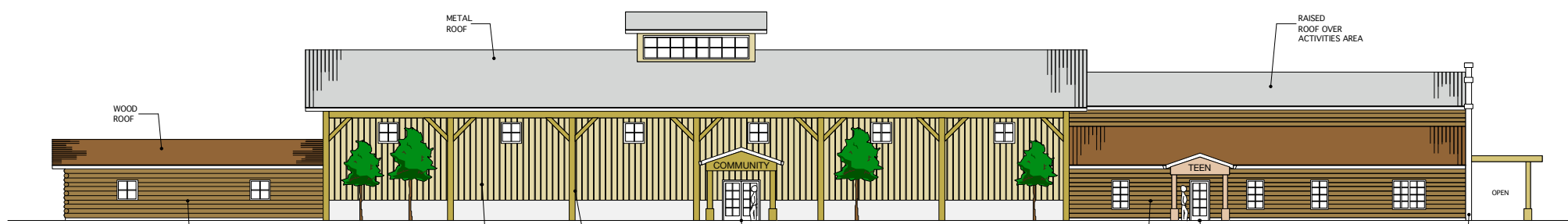


FRONT ELEVATION - NORTH  
SCALE: 1/8"=1'-0"



2ND AVE ELEVATION - WEST  
SCALE: 1/8"=1'-0"



ELEVATION TO BALL FIELDS - EAST  
SCALE: 1/8"=1'-0"

THE BOYS & GIRLS CLUB  
FERNDAL, WA

03.12.08  
**DOUGLAS LANSEM ARCHITECT AIA**  
LICENSED ARCHITECT IN WASHINGTON, ALASKA & HAWAII  
1477 NORTH FORBES  
BELLINGHAM, WA 98225  
PHONE: 735-3466 FAX: 735-3464